

# 6" Super Sloped Ceiling Medium Base IC Housing

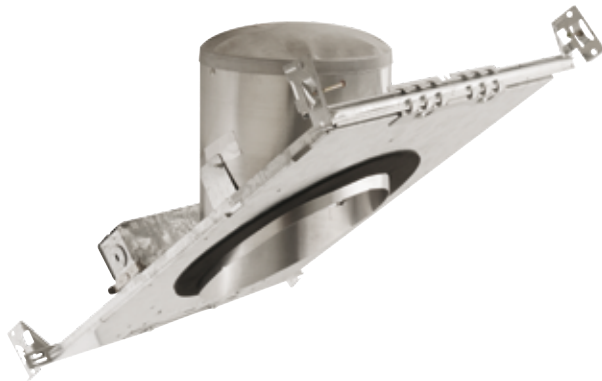
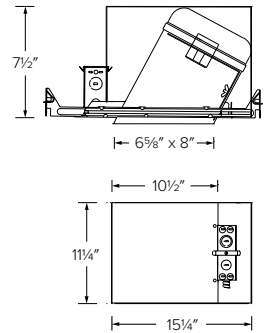


**EL946ICA**

## 6" IC Airtight Double Wall New Construction

Can be used in insulated ceilings with lamps up to 90W.  
Fits in 2" x 8" joist construction.

**INPUT VOLTAGE** 120V AC  
**CEILING SLOPES** Pitch range from 7/12 to 12/12  
**JUNCTION BOX** Listed for Through Branch circuit wiring with five 1/4" knockouts and 4 true pryout slots for romex cable  
**THERMAL PROTECTOR GUARDS** Protection against improper lamping  
**CAPTIVE HANGER BARS** Up to 24" Joists with Real Nail  
**7 1/2" HEIGHT** Allows for use in 2" x 8" construction  
**ALUMINUM CONSTRUCTION** Double Wall Housing  
**DAMP LOCATION** UL Listed  
**FEED THROUGH** UL Listed  
**DIRECT CONTACT WITH INSULATION** UL Listed  
**AIRTIGHT** Per ASTM E-283  
**LAMPS** Traditional or LED PAR30/PAR38 MAX. 90W

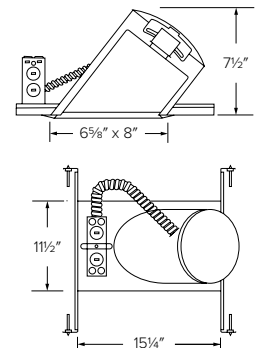


**EL901ICA**

## 6" IC Airtight Single Wall New Construction

Can be used in insulated ceilings with lamps up to 75W.  
Fits in 2" x 8" joist construction.

**INPUT VOLTAGE** 120V AC  
**CEILING SLOPES** Pitch range from 7/12 to 12/12  
**JUNCTION BOX** Listed for Through Branch circuit wiring with five 1/4" knockouts and 4 true pryout slots for romex cable  
**THERMAL PROTECTOR GUARDS** Protection against improper lamping  
**CAPTIVE HANGER BARS** Up to 24" Joists with Real Nail  
**7 1/2" HEIGHT** Allows for use in 2" x 8" construction  
**ALUMINUM CONSTRUCTION** Single Wall Housing  
**DAMP LOCATION** UL Listed  
**FEED THROUGH** UL Listed  
**DIRECT CONTACT WITH INSULATION** UL Listed  
**AIRTIGHT** Per ASTM E-283  
**LAMPS** Traditional or LED PAR30/PAR38 MAX. 75W



**EL901RICA**

## 6" IC Airtight Remodel

Can be used in insulated ceilings with lamps up to 75W.  
Fits in 2" x 8" joist construction.

**INPUT VOLTAGE** 120V AC  
**CEILING SLOPES** Pitch range from 7/12 to 12/12  
**JUNCTION BOX** Listed for Through Branch circuit wiring with five 1/4" knockouts and 4 true pryout slots for romex cable  
**THERMAL PROTECTOR GUARDS** Protection against improper lamping  
**7 1/2" HEIGHT** Allows for use in 2" x 8" construction  
**DAMP LOCATION** UL Listed  
**FEED THROUGH** UL Listed  
**DIRECT CONTACT WITH INSULATION** UL Listed  
**AIRTIGHT** Per ASTM E-283  
**LAMPS** Traditional or LED PAR30/BR30/PAR38 MAX 75W

